

# use in CLADDING

Standard of reference	NF EN 636-3
Quality labels	CTBx - KOMO
THEBAULT Products recommendation	TeboPaint Garant TeboGarant TeboPrime

The decision to use THEBAULT plywood for a given application should be made with reference to the standards governing product technical specifications, and installation should be undertaken in line with the relevant health and safety regulations.

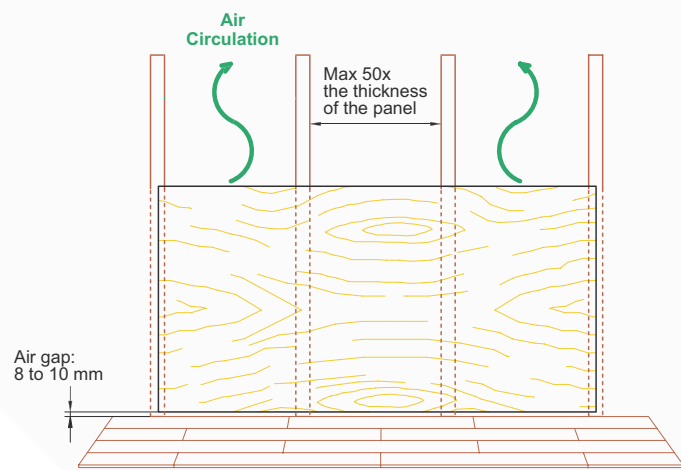
Used in cladding, THEBAULT plywood panels provide protection against the elements and enhance the aesthetic appeal of the building. They show a good impact resistance, but do not fulfil the function of bracing.

## PANELS PROPERTIES

THEBAULT plywood panels used in cladding should be of exterior type in accordance with EN 636-3 and meet the following requirements:

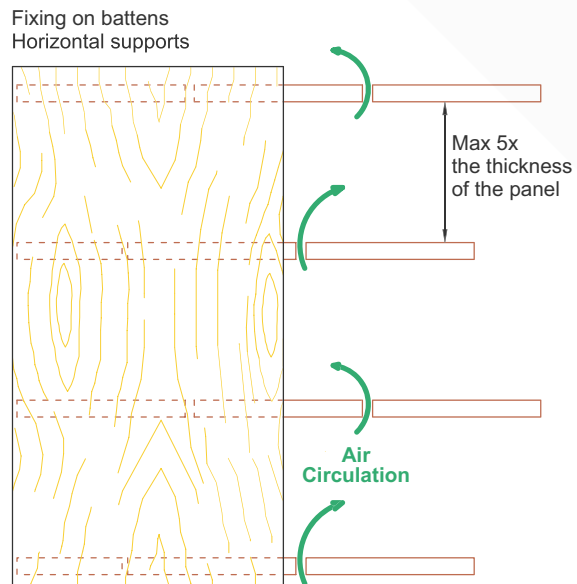
- Lay - up: minimum 5 ply
- Minimum thickness 10 mm. When panels are supposed to be grooved the thickness is measured from the bottom of the groove.
- Surface appearance class: I or II in accordance with EN 635-2.

## SUPPORTS



Support battens are fixed vertically, leaving an airspace of at least 10 mm and meeting the requirements of service class 2.

- They should be wide enough to allow a supporting width for the THEBAULT plywood panels of at least 35 mm.
- In case where the battens are fixed horizontally, they should be laid on interrupted battens and mounted in such a way that they neither hinder the air circulation nor the evacuation of waters which accidentally could have occurred behind the cladding.
- The maximum spacing between the supports should be 50 times the thickness of the panel and should not exceed 75 mm.
- The supports should be protected from the elements by a rain guard.



Groupe THEBAULT  
47, rue des Fontenelles  
79 460 MAGNE - France  
Tél : +33 (0)5 49 35 70 20  
info@groupe-thebault.com

[www.groupe-thebault.com](http://www.groupe-thebault.com)

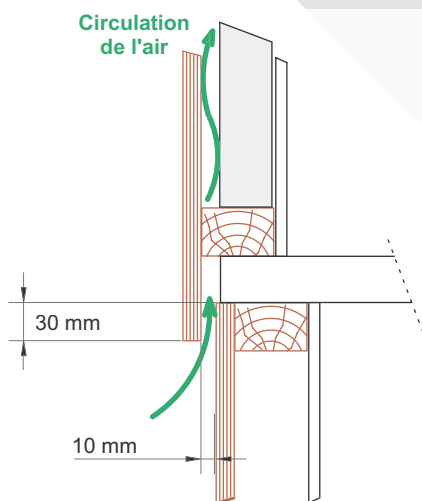
## INSTALLATION

- Before installation on site, THEBAULT plywood panels should be prepared in the workshop.
- After cutting, it is essential to seal the edges with a waterproof material and to apply a protective undercoat on both sides.
- THEBAULT plywood panels can be laid over concrete, steel or wooden framing structures.
- Provision for an expansion gap of 2 mm per metre between the panels is essential.
- When wooden supports are used, protection against water is provided by a rain screen. Fixings, galvanised or stainless steel screws, must penetrate by at least 25 mm.
- THEBAULT grooved panels will be installed vertically in order to allow the rain to run off via the grooves.
- The design of components should eliminate potential areas water collection ( e.g. U profile at the bottom of the panels).

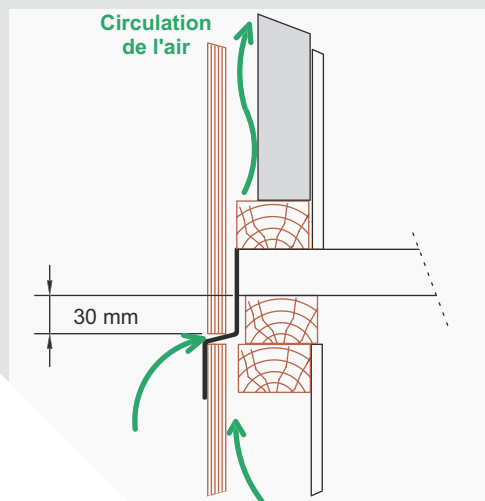
## HORIZONTAL JOINTS

Horizontal joints between THEBAULT plywood panels may be made by overlapping or with the help of a horizontal joining strip in metal or plastic.

- Overlapping of the lower panel by the upper panel:



- Installation of a joining strip:



- Particular care should be taken particular to protect the lower edge of the upper panel.
- Use of U-shaped metal or plastic side moulding is forbidden.
- In the lower section, the lower edge of the bottom panel and its external coating should form a drip course and be at least 200mm from the ground. In addition this particular edge must be protected in the workshop against risk of moisture regain.

## VERTICAL JOINTS

Vertical joints between THEBAULT plywood panels should be fixed to a support and may:

- remain loose and not filled: in such a case it is essential to protect the support with a rain screen and seal the edges;
- be filled: in such a case the use of a synthetic filler over a width of 5 mm to 8mm is recommended
- be protected by a cover - joint.